

# MONTHLY MEMBERSHIP PROGRESS REPORT

LOCATION WISCONSIN

District 27 B1

Results as of: 7/31/2022

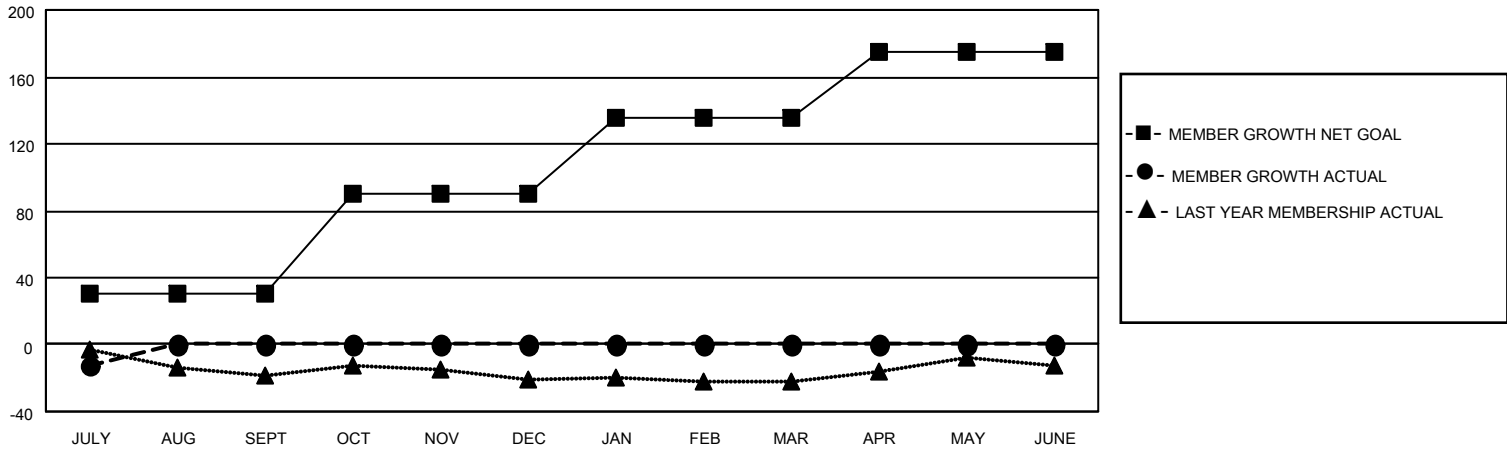
Clubs			
RESULTS FOR 2022-2023			
QUARTER	NEW CLUB GOAL	NEW CLUBS	DROPPED CLUBS
JULY/AUG/SEPT	0	0	0
OCT/NOV/DEC	1	0	0
JAN/FEB/MAR	0	0	0
APR/MAY/JUNE	1	0	0

Members			
RESULTS FOR 2022-2023			
QUARTER	MEMBER GROWTH NET GOAL	MEMBER GROWTH ACTUAL	DROPPED MEMBERS ACTUAL (including transfers)
JULY/AUG/SEPT	30	12	25
OCT/NOV/DEC	60	0	0
JAN/FEB/MAR	45	0	0
APR/MAY/JUNE	40	0	0

**GOALS AND ACTUAL NEW CLUBS CUMULATIVE**



**GOALS AND ACTUAL MEMBERS CUMULATIVE**



**DROPPED CLUBS: 0**

**6 CLUBS OF 63 ADDED 1 OR MORE NEW MEMBERS**

**GENDER DISTRIBUTION**

MALE	1,346 (73.51%)
FEMALE	485 (26.49%)
NON BINARY	0 (0.00%)
PREFER NOT TO ANSWER	0 (0.00%)

**DROPPED MEMBERS**

[CLICK HERE FOR CUMULATIVE MEMBERSHIP DATA](#)

DECEASED	2
CLUB CANCELLED	0
OTHER	23
<b>TOTAL</b>	<b>25</b>

TOTAL FAMILY UNIT MEMBERS	354
FAMILY MEMBERS PAYING HALF DUES	179